

Ford Motor Company Customer Relationship Center
P.O. Box 6248
Dearborn, MI 48121
1-800-392-3673 (FORD)
(TDD for the hearing impaired: 1-800-232-5952)



This Quick Reference Guide is not intended to replace your vehicle Owner's Guide which contains more detailed information concerning the features of your vehicle, as well as important safety warnings designed to help reduce the risk of injury to you and your occupants. Please read your entire Owner's Guide carefully as you begin learning about your new vehicle and refer to the appropriate chapters when questions arise.



1 CD EJECT Press ▲ and a memory preset 1-6 to eject a CD from a specific slot. Press and hold to auto eject all CDs present in the system.

2 LOAD Press LOAD and a memory preset to load a specific slot. Press and hold to autoloading up to six CDs.

3 AM/FM Press to select AM/FM1/FM2 frequency band.

4 SEEK Press to access the previous or next strong station, CD track, previous/next channel (if equipped with satellite radio), previous/additional display text or category.

5 TEXT/SCAN Press and hold to hear a brief sampling of radio stations or CD tracks. Press again to stop. In CD/MP3 mode, press and release to display track title, artist name and disc title.

6 FOLDER In folder mode, press to access previous or next folder on MP3 discs, if available.

SATELLITE RADIO FEATURES AND CONTROLS (if equipped)

7 AUX Press repeatedly to cycle through FES/DVD (if equipped), SAT1, SAT2, SAT3 (satellite radio mode if equipped), or LINE IN (auxiliary audio mode if equipped). Press AM/FM to return to radio mode.

Satellite radio is available only with a valid SIRIUS radio subscription. Check with your authorized dealer for availability.

8 TUNE/DISC SELECTOR In radio mode, press to go up/down the frequency band. In menu mode, use to select various settings. In CD/MP3 mode, press to select a desired disc.

9 MENU Press this button when satellite radio mode is active to access. Press OK to enter into the SATELLITE RADIO MENU. Press ▲/▼ to cycle through the following options: Category, Save Song, Delete Song, Delete All Songs and Enable Alerts/Disable Alerts. For more information, please consult your Owner's Guide.

10 ►/|| OK (PLAY/PAUSE) This control is operational in CD and DVD mode (if equipped). When a CD or DVD is playing in the FES system, press this control to play or pause the current CD/DVD. The CD/DVD status will display in the radio display.

OK: Use in various menu selections.

SETTING THE CLOCK Press MENU until SELECT HOUR or SELECT MINS is displayed. Press ▲/▼ / ◀SEEK▶ to adjust the hours/minutes.

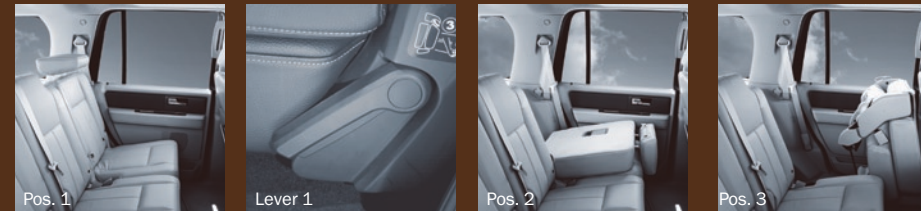
NAVIGATION SYSTEM (if equipped) Please refer to the Navigation Supplement for more information on the navigation system.

SECOND ROW SEATS

IMPORTANT: Before folding the second row seats, ensure that the head restraints are fully flipped down by pulling on the strap and that all items have been removed from the floor and off the seats.

ENTERING THE THIRD ROW SEAT

Fold head restraint forward (**Pos. 1**). Pull up on the lever (**Lever 1**) located on the side of either outboard second row seat until the seatback folds forward to the seat cushion (**Pos. 2**). Pull lever fully upward (**Lever 1**). The seat will then flip forward (**Pos. 3**).



EXITING THE THIRD ROW SEAT

Fold head restraint forward (**Pos. 4**). Pull up on the strap located at the back of the second row seat by the outboard side shield (**Pull Strap**). The seatback will fold forward to the cushion (**Pos. 5**). Continue pulling up on the pull strap and the seat will flip forward (**Pos. 6**). To return the seat to the upright position, push the seat down until it is latched to the floor strikers. Then, lift the seatback to the upright position and flip the head restraint to the upright position.



FOLDING THE OUTBOARD SEATBACKS TO A LOAD FLOOR POSITION – (REFER TO THE IMPORTANT NOTE ABOVE)

To fold the seats to a load floor position, lift the lever (**Lever 1**) located on the outboard side of the seat to release the seatback. To lower the seat further to the fully-lowered position for maximum cargo capacity, locate (**Lever 2**) on the seatback. Pulling the lever releases the seat into the kneel-down floor position. A moderate force may be required to move the seat forward and down.



SECOND ROW SEATS (CONTINUED)

RETURNING THE SEATS TO THE UPRIGHT POSITION FROM THE FULLY-LOWERED FLOOR POSITION

The seatback cannot be returned to the upright position until the seat is returned from the kneel-down position. To return the seat to the upright position, lift and pull the seat rearward until the latch is fully engaged. Do not attempt to unlatch the rear floor hooks while the seat is in the kneel-down position.

With the seatback in the folded down position, lift up on the seatback. This will allow the seatback to be lifted to the upright locked position.



FOLDING THE 20% MIDDLE SEAT (if equipped) TO A LOAD FLOOR POSITION

To fold the seat, pull the lever (**Lever 3**) located on the seatback to release the folding seat latch. With the latch released, the seatback can be lowered into the load floor position. A moderate force may be required to move the seat forward and down.



RETURNING THE 20% MIDDLE SEAT TO THE UPRIGHT POSITION FROM THE FULLY-LOWERED FLOOR POSITION

To return the seat to the upright position, lift and pull the seatback until the seat latch is fully engaged.

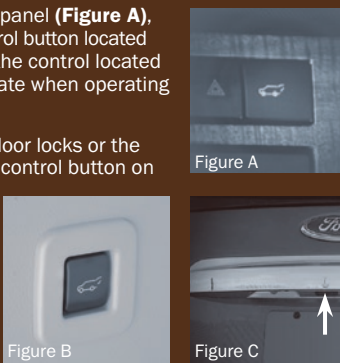
POWER LIFTGATE OPERATION

To open the power liftgate, push the button on the instrument panel (**Figure A**), press on your five-button key fob, or press the liftgate control button located on the inside of the liftgate handle. To close, press and release the control located in the left rear quarter panel (**Figure B**). Keep clear of the liftgate when operating the rear switch.

To open a manual liftgate, unlock the liftgate (with the power door locks or the remote entry transmitter button) and push the outside liftgate control button on the handle below the license plate. To close, make certain the liftgate window is closed, and then push the liftgate closed until it latches securely.

To unlatch the liftgate window, push the button (**Figure C**) on the liftgate located to the left of the license plate.

Do not open the liftgate or the liftgate window in a garage or other enclosed area with a low ceiling.



ESSENTIAL INFORMATION

FUEL TANK CAPACITY Your vehicle's fuel tank can accommodate 28 gallons (106L) of gasoline. (Expedition EL accommodates 33.5 gallons (126.8L) of gasoline.) Your vehicle is designed to use "Regular" unleaded gasoline with a pump (R+M)/2 octane rating of 87 for optimum performance. The use of gasoline with lower octane ratings may degrade performance.

TIRE PRESSURE Your tire pressure is properly set at the dealership according to the recommended specifications found on the Safety Compliance Certification Label or Tire Label located on the driver's door latch pillar or the edge of the driver's door. Please check your tire pressure during routine maintenance and seasonal changes and when the Tire Pressure Monitoring System warning indicator is illuminated. ⚠ Warning: Improperly inflated tires can affect vehicle handling and tire performance. See "Additional Features" on the reverse side for more information on the TPMS.

FUSES If electrical components in the vehicle are not working, a fuse may have blown. For more information about changing a fuse, please consult your Owner's Guide.

FUEL PUMP SHUT-OFF SWITCH After a collision, if the engine cranks but does not start, the fuel pump shut-off switch may have to be reset. The switch is located in the left rear quarter trim panel, near the liftgate, behind an access panel. For complete details on resetting the switch, please consult your Owner's Guide.

CHANGING THE TIRES If you get a flat tire while driving, do not apply the brake heavily. Instead, gradually decrease your speed. Hold the steering wheel firmly and slowly move to a safe place on the side of the road. Prior to jacking, hoisting or towing your vehicle, be sure to turn OFF the running boards (if equipped) and the optional rear load leveling suspension. Never place your hand between the extended running board and the vehicle. A moving running board may cause injury. Your vehicle may be equipped with a conventional spare tire that is different in one or more of the following: type, brand, size, speed rating and tread design. Your vehicle may be equipped with a spare wheel that may not match the road wheels and is not equipped with a Tire Pressure Monitor System (TPMS) sensor.

LOCATION OF THE SPARE TIRE AND TOOLS

Item	Location
Spare Tire	Under the vehicle, just forward of the rear bumper
Jack Tools and Jacking Instructions	Under the access panel, located in the floor compartment behind the third row seat

ROADSIDE EMERGENCIES To fully assist you if you should have a vehicle concern, Ford Motor Company offers a complimentary roadside assistance program. This program is separate from the New Vehicle Limited Warranty. The service is available 24 hours a day, seven days a week for the New Vehicle Limited Warranty period (U.S.) or Basic Warranty period (Canada). Roadside assistance will cover:

- Changing a flat tire
- Jump-starts
- Limited fuel delivery
- Lockout assistance
- Towing of your vehicle
- Winch Out

ROADSIDE ASSISTANCE CENTERS

Country	Phone Number
United States	1-800-241-3673
Canada	1-800-665-2006

For complete details on any roadside assistance concern, please consult the Roadside Emergencies chapter, or the Customer Assistance chapter in your Owner's Guide.



08 EXPEDITION

QUICK REFERENCE GUIDE



08 FORD EXPEDITION

QUICK REFERENCE GUIDE

In order to help you fully appreciate the countless features of your new Expedition, we invite you to explore this easy-to-use Quick Reference Guide. For more information, please consult your Owner's Guide.

This vehicle handles differently from an ordinary passenger car in driving conditions which may occur on streets and highways and off-road. DRIVE WITH CARE AND WEAR A SAFETY BELT AT ALL TIMES. Ford urges you to read the Owner's Guide and Driving Your SUV or Truck Supplement for further information on safe driving precautions and instructions.

Use extreme caution with any device or feature that may take your attention off the road. Your primary concern is safe operation of the vehicle. Only use non-essential features and devices when it is safe to do so.



1 HEADLAMP Rotate clockwise to the first position to turn on the parking lamps. Rotate to the second position to also turn on the headlights. Rotate counterclockwise to activate the autolamp, which provides light sensitive automatic on-off control of the exterior lights and keeps them on for a short period of time after the ignition is turned OFF. When the control is in any position except high beams or off, pull the control toward you to activate the foglamps.

2 TURN SIGNAL AND WIPER/WASHER CONTROL Push down to activate the left turn signal, or up to activate the right turn signal. On equipped vehicles, the lower portion of the corresponding side view mirror will blink to provide an additional warning to other drivers that your vehicle is about to turn.

For front wiper operation, rotate the end of the control away from you to increase the speed and toward you to decrease the speed.

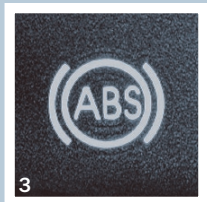


The speed dependent feature also allows the wipers to adjust automatically as the vehicle's speed changes. Push in the end of the stalk briefly for a single wipe (no wash). Push in and hold to activate the washer and wipers.

The ring on the right operates the rear window wiper. Rotate the control to 2 (normal speed), 1 (intermittent operation), or back to off.

3 ABS WARNING LAMP This lamp illuminates briefly when the ignition is turned to the ON position. In an emergency, apply continuous force on the brake to prevent wheel lockup when braking on slippery surfaces - do not pump your brakes. Any pulsation or noise you may feel or hear is not abnormal.

4 SERVICE ENGINE SOON LAMP This lamp illuminates briefly to ensure the system is functional. If the lamp comes on after the engine is started, refer to your Owner's Guide. To help prevent



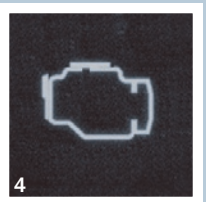
activation, always secure your fuel cap by turning it clockwise 1/4 of a turn until at least a few clicks are heard.

Please note that if the fuel cap is not properly secured, will be displayed on the optional message center. Upon restarting the vehicle, it may take a few driving cycles (mileage accumulation) for the lamp to clear. If your vehicle is not equipped with a message center, the Service Engine Soon lamp will illuminate.

5 MESSAGE CENTER (if equipped) Please see "Additional Features" for more details.

6 AIR FLOW ADJUST You can direct or shut off the air flow from the instrument panel registers. To open the registers for airflow, press the indentation in the vent. Adjust as desired. Close the vents flat to shut off the air flow.

7 AUDIO SYSTEM (if equipped) Please see reverse side for more details.

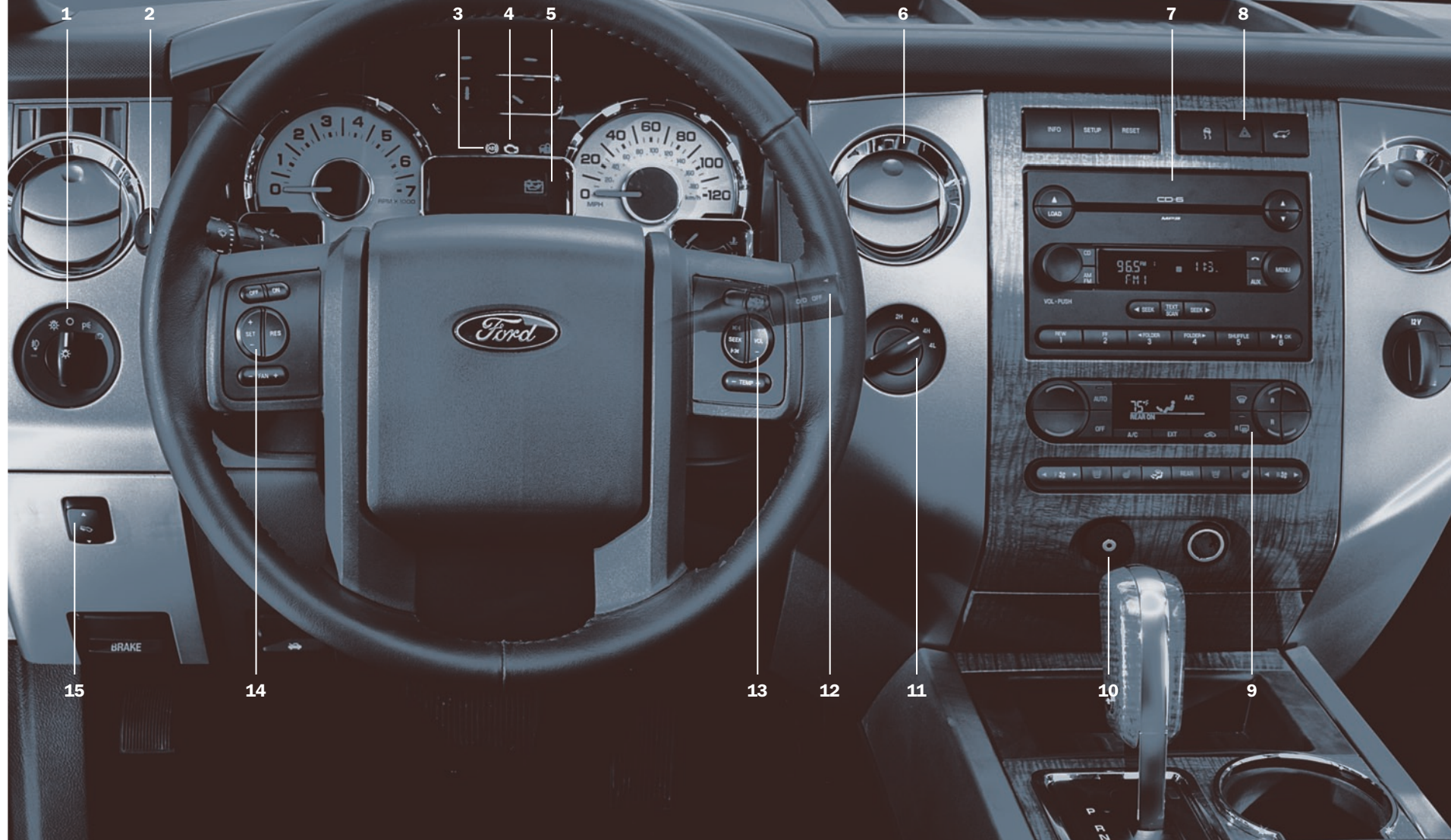


8 HAZARD FLASHER CONTROL Press to activate hazard flashers in an emergency to warn traffic of vehicle breakdown, approaching danger, etc. Press again to turn the flashers off. The hazard flashers can be operated when the ignition is off.

9 REAR WINDOW DEFROSTER Press to activate rear window defrost. The indicator light on the control will illuminate. When in operation, the rear window defroster also defrosts the side view mirrors. The rear window defroster will automatically turn off after 15 minutes of operation. Press the control again to re-engage if needed.

10 AUXILIARY INPUT JACK Your vehicle is equipped with an Auxiliary Input Jack located below the climate control. This allows you to plug and play auxiliary audio devices. Press AUX repeatedly on your audio system to access. When LINE IN appears in the display, plug in your auxiliary audio device.

INSTRUMENT PANEL



1 2 3 4 5

6 7 8 9 10 11 12 13 14 15



11 CONTROL TRAC FOUR-WHEEL DRIVE (4X4) OPERATION (if equipped) 2H (2WD) delivers power to the rear wheels only. This is appropriate for normal on-road driving on dry pavement.

4A (4X4 AUTO) provides electronic control four-wheel drive with power delivered to all four wheels, as required, for increased traction. The message center will display "4X4 AUTO" when this position is selected. This mode is appropriate for all on-road driving conditions, such as dry road surfaces, wet pavement, snow or gravel.

4H (4X4) provides electronically locked four-wheel drive power to all four wheels. The message center will display "4X4" when this position is selected. This position is only intended for severe winter or off-road conditions, such as



deep snow, ice or shallow sand. **4L (4X4 LOW)** provides electronically locked four-wheel drive when extra power at reduced speeds is required. The message center will display "4X4 LOW" when this position is selected.

To shift from 2H to 4A or 4H, move the control to the 4A or 4H position at any forward speed up to 55 mph (88 km/h) or at a stop. The message center may display "4X4 SHIFT IN PROGRESS" during the system shift. The message center will then display "4X4 AUTO" if 4A is selected or "4X4" if 4H is selected.

To shift from 4A to 4H, move the control from 4A to 4H at a stop or while driving at any speed. The message center will display "4x4".

To shift to/from 4L, bring the vehicle to a stop. Place the gearshift in N (Neutral), then move the control to the desired position. The message center will display "4X4 SHIFT IN PROGRESS" during



the shift. The message center will then display the system mode selected. If any of the above shift conditions are not met, the shift will not occur and the message center will display the appropriate information. **Note:** Some noise may be heard as the system shifts or engages.

12 GEARSHIFT/OVERDRIVE CONTROL Overdrive to operate, the speed control must be ON. To set a higher speed, press SET + again. To set a lower speed, press SET -. Pressing RES will return to a previously set speed. To turn the speed control off, press the OFF button, or depress the brake pedal to disengage.

13 STEERING WHEEL CONTROLS (if equipped) For audio control operation, press MEDIA to select



which media to play. Depending on the mode, press SEEK to select a preset station on a disc, or to advance through preset channels or subscribed channels. Use VOL to adjust volume. For climate control operation, press TEMP + or - to adjust temperature. Press the control with the fan icon + or - to adjust fan speed.

14 SPEED CONTROL To operate, the speed control must be ON. To set a higher speed, press SET + again. To set a lower speed, press SET -. Pressing RES will return to a previously set speed. To turn the speed control off, press the OFF button, or depress the brake pedal to disengage.

15 POWER ADJUSTABLE FOOT PEDALS (if equipped) Press and hold the rocker control to adjust the accelerator and brake pedal toward you or away from you. Adjust the pedals only when the vehicle is stopped and the gearshift lever is in the P (Park) position.

ADDITIONAL FEATURES



1 ADVANCETRAC® WITH RSC STABILITY ENHANCEMENT SYSTEM The AdvanceTrac with Roll Stability Control™ (RSC) system provides stability enhancement features for certain driving situations when driver assistance is needed. It helps your vehicle maintain traction when driving on slippery and/or hilly road surfaces. If your vehicle should become stuck, try switching the system off by pressing and momentarily holding the AdvanceTrac® with RSC button on the instrument panel. Remember to switch the AdvanceTrac® with RSC system on once the vehicle is no longer stuck.

2 KEYLESS ENTRY SYSTEM With this control you can lock or unlock all doors and liftgate without using a key. First, enter your five-digit program code and then press the corresponding quick key:

To unlock all doors and liftgate, press 3-4.

To lock all doors and liftgate, press 7-8 and 9-0 simultaneously.

3 HEATED AND COOLED SEATS (if equipped) The driver and passenger heated and cooled seat buttons are located on the climate control. Press the heated seat button once for full heat, twice for low heat. Press again to turn off this feature.



4 MESSAGE CENTER (if equipped) The message center displays important vehicle information through a constant monitor of vehicle systems (with the ignition in the ON position). The system will notify you of potential vehicle problems with a display of system warnings followed by a long indicator chime. You may select display features on the message center by pressing the INFO or SETUP buttons. The RESET button may be used to reset select functions in the INFO and SETUP menus.

For complete details on the message center display features, please consult your Owner's Guide.

5 TIRE PRESSURE MONITORING SYSTEM (TPMS) This system monitors tire pressure on all road tires and provides the driver with a yellow warning light when air needs to be added. Message center equipped vehicles provide additional warning messages. The TPMS warning light will reset itself (turn off) after the tires are inflated to the proper pressure and the vehicle is driven above 20 mph (32 km/h) for two minutes.

6 POWERFOLD MIRRORS (if equipped) Rotate the 4-way adjustment switch located on the driver's door, to the center



position. Press the switch down to fold in the mirrors. Press again to fold them back to the original position. Fold the side mirrors in carefully when driving through a narrow space, like an automatic car wash.

If you fold in a mirror manually, the power fold mirrors will need to be reset. To reset, move the 4-way adjustment switch to the center position. Press the switch down to fold the mirrors in, and wait for approximately 8 seconds. You should hear a click indicating the mirrors have been reset.

If you do not hear a click, press the switch to fold the mirrors back out, and repeat the reset procedure.

7 REVERSE CAMERA SYSTEM (if equipped) The reverse camera system provides a video image of the area behind the vehicle. The reverse camera system will automatically provide an image in the rear view mirror, when the vehicle is placed in R (Reverse) gear. This image will continue to be displayed on the mirror for a few seconds, once the vehicle has been shifted out of R (Reverse) gear.

Note: The reverse camera system is a reverse aid supplement device that still requires the driver to use it in conjunction with the rear view and side view mirrors for maximum coverage. For complete details on the reverse camera system, please consult your Owner's Guide.